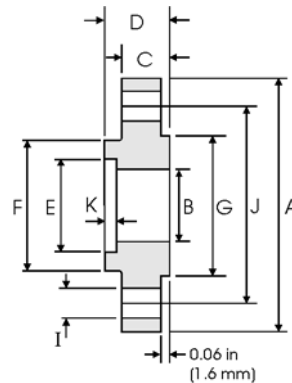


Socket Welding Flanges - ANSI B16.5



Class 150 lb

Pipe		Flange						Hub	Raised Face	Drilling Data			Weight
Nominal Pipe Size	Outside Diameter	Overall Diameter	Inside Diameter	Flange Thickness min	Overall Length	Socket Diameter	Depth of Socket	Hub Diameter	Face Diameter	No. of Holes	Bolt Hole Diameter	Diameter of Circle of Holes	kg/ piece
	in mm	in mm	in mm	in mm	in mm	in mm	in mm	in mm	in mm		in mm	in mm	
1/2	0.840	3.500	0.620	0.440	0.620	0.880	0.380	1.190	1.380	4	0.620	2.380	0.42
	21.30	88.90	15.70	11.20	15.70	22.40	9.600	30.20	35.10		15.70	60.45	
3/4	1.050	3.880	0.820	0.500	0.620	1.090	0.440	1.500	1.690	4	0.620	2.750	0.59
	26.70	98.60	20.80	12.70	15.70	27.70	11.10	38.10	42.90		15.70	69.85	
1	1.315	4.250	1.050	0.560	0.690	1.360	0.500	1.940	2.000	4	0.620	3.120	0.81
	33.40	108.0	26.70	14.20	17.50	34.50	12.70	49.30	50.80		15.70	79.25	
1 1/4	1.660	4.620	1.380	0.620	0.810	1.700	0.560	2.310	2.500	4	0.620	3.500	1.07
	42.20	117.3	35.10	15.70	20.60	43.20	14.20	58.70	63.50		15.70	88.90	
1 1/2	1.900	5.000	1.610	0.690	0.880	1.950	0.620	2.560	2.880	4	0.620	3.880	1.36
	48.30	127.0	40.90	17.50	22.30	49.50	15.70	65.00	73.15		15.70	98.60	
2	2.375	6.000	2.070	0.750	1.000	2.440	0.690	3.060	3.620	4	0.750	4.750	2.10
	60.30	152.4	52.60	19.10	25.40	62.00	17.50	77.70	91.90		19.10	120.7	
2 1/2	2.875	7.000	2.470	0.880	1.120	2.940	0.750	3.560	4.120	4	0.750	5.500	3.33
	73.00	177.8	62.70	22.40	28.40	74.70	19.00	90.40	104.6		19.10	139.7	
3	3.500	7.500	3.070	0.940	1.190	3.570	0.810	4.250	5.000	4	0.750	6.000	3.90
	88.90	190.5	78.00	23.90	30.20	90.70	20.60	108.0	127.0		19.10	152.4	

Class 300 lb

Pipe		Flange						Hub	Raised Face	Drilling Data			Weight
Nominal Pipe Size	Outside Diameter	Overall Diameter	Inside Diameter	Flange Thickness min	Overall Length	Socket Diameter	Depth of Socket	Hub Diameter	Face Diameter	No. of Holes	Bolt Hole Diameter	Diameter of Circle of Holes	kg/ piece
	in mm	in mm	in mm	in mm	in mm	in mm	in mm	in mm	in mm		in mm	in mm	
1/2	0.840	3.750	0.620	0.560	0.880	0.880	0.380	1.500	1.380	4	0.620	2.620	0.66
	21.30	95.20	15.70	14.20	22.30	22.40	9.600	38.10	35.10		15.70	66.55	
3/4	1.050	4.620	0.820	0.620	1.000	1.090	0.440	1.880	1.690	4	0.750	3.250	1.15
	26.70	117.3	20.80	15.70	25.40	27.70	11.10	47.70	42.90		19.10	82.50	
1	1.315	4.880	1.050	0.690	1.060	1.360	0.500	2.120	2.000	4	0.750	3.500	1.40
	33.40	123.9	26.70	17.50	26.90	34.50	12.70	53.80	50.80		19.10	88.90	
1 1/4	1.660	5.250	1.380	0.750	1.060	1.700	0.560	2.500	2.500	4	0.750	3.880	1.75
	42.20	133.3	35.10	19.00	26.90	43.20	14.20	63.50	63.50		19.10	98.60	
1 1/2	1.900	6.120	1.610	0.810	1.190	1.950	0.620	2.750	2.880	4	0.880	4.500	2.55
	48.30	155.4	40.90	20.60	30.20	49.50	15.70	69.85	73.15		22.30	114.3	
2	2.375	6.500	2.070	0.880	1.310	2.440	0.690	3.310	3.620	8	0.750	5.000	2.93
	60.30	165.1	52.60	22.30	33.20	62.00	17.50	84.00	91.90		19.10	127.0	
2 1/2	2.875	7.500	2.470	1.000	1.500	2.940	0.750	3.940	4.120	8	0.880	5.880	4.40
	73.00	190.5	62.70	25.40	38.10	74.70	19.00	100.0	104.6		22.30	149.3	
3	3.500	8.250	3.070	1.120	1.690	3.570	0.810	4.620	5.000	8	0.880	6.620	5.92
	88.90	209.5	78.00	28.40	42.90	90.70	20.60	117.3	127.0		22.30	168.1	

Notes

- Dimension B corresponds to the pipe inside diameter. Values quoted assume 40S/Standard wall thickness.
- Weights are based on manufacturer's data and are approximate.

Feiting Pipe Engineering Co.,Ltd

Shanghai Plant: 85# Shande Road, Jinshan District Shanghai

Zhejiang Plant: Feiyun Dist, Rui'an Develop area, Zhejiang

Manufacturer/Exporter – Forged, Buttweld Pipe Fittings, Forged Flanges

Contact Us: international@chinafeiting.com; Direct line: 0510-83590332, Fax: 0510-83594500

www.metline-pipefittings.in