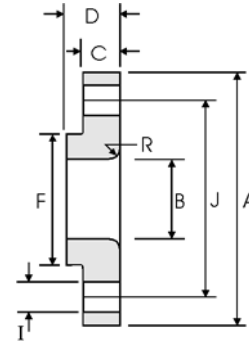


Lap Joint Flanges - ANSI B16.5



Class 600 lb

Pipe		Flange Data				Lap	Hub	Drilling Data			Weight
Nominal Pipe Size	Outside Diameter	Overall Diameter	Inside Diameter	Flange Thickness min	Overall Length	Lap Radius	Hub Diameter	Number of Holes	Bolt Hole Diameter	Diameter of Circle of Holes	kg/ piece
	in mm	in mm	in mm	in mm	in mm	in mm	in mm		in mm	in mm	
1/2	0.840	3.750	0.900	0.560	0.880	0.120	1.500	4	0.620	2.620	0.72
	21.30	95.30	22.90	14.20	22.40	3.000	38.10		15.70	66.55	
3/4	1.050	4.620	1.110	0.620	1.000	0.120	1.880	4	0.750	3.250	1.25
	26.70	117.3	28.20	15.70	25.40	3.000	47.80		19.10	82.60	
1	1.315	4.880	1.380	0.690	1.060	0.120	2.120	4	0.750	3.500	1.50
	33.40	124.0	35.10	17.50	26.90	3.000	53.80		19.10	88.90	
1 1/4	1.660	5.250	1.720	0.810	1.120	0.190	2.500	4	0.750	3.880	2.00
	42.20	133.4	43.70	20.60	28.40	4.800	63.50		19.10	98.60	
1 1/2	1.900	6.120	1.970	0.880	1.250	0.250	2.750	4	0.880	4.500	2.92
	48.30	155.4	50.00	22.40	31.75	6.400	69.85		22.40	114.3	
2	2.375	6.500	2.460	1.000	1.440	0.310	3.310	8	0.750	5.000	3.55
	60.30	165.1	62.50	25.40	36.60	7.900	84.10		19.10	127.0	
2 1/2	2.875	7.500	2.970	1.120	1.620	0.310	3.940	8	0.880	5.880	5.23
	73.00	190.5	75.40	28.40	41.10	7.900	100.1		22.40	149.4	
3	3.500	8.250	3.600	1.125	1.810	0.380	4.620	8	0.880	6.620	6.95
	88.90	209.6	91.40	31.75	46.00	9.700	117.3		22.40	168.1	
3 1/2	4.000	9.000	4.100	1.380	1.940	0.380	5.250	8	1.000	7.250	8.78
	101.6	228.6	104.1	35.10	49.30	9.700	133.4		25.40	184.2	
4	4.500	10.75	4.600	1.500	2.120	0.440	6.000	8	1.000	8.500	14.4
	114.3	273.1	116.8	38.10	53.80	11.20	152.4		25.40	215.9	
5	5.563	13.00	5.690	1.750	2.380	0.440	7.440	8	1.120	10.50	24.3
	141.3	330.2	114.5	44.50	60.45	11.20	189.0		28.40	266.7	
6	6.625	14.00	6.750	1.880	2.620	0.500	8.750	12	1.120	11.50	28.5
	168.3	355.6	171.5	47.80	66.55	12.70	222.3		28.40	292.1	
8	8.625	16.50	8.750	2.190	3.000	0.500	10.75	12	1.250	13.75	43.1
	219.1	419.1	222.3	55.60	76.20	12.70	273.1		31.75	349.3	
10	10.75	20.00	10.92	2.500	4.380	0.500	13.50	16	1.380	17.00	70.5
	273.0	508.0	277.4	63.50	111.3	12.70	342.9		35.10	431.8	
12	12.75	22.00	12.92	2.620	4.620	0.500	15.75	20	1.380	19.25	86.1
	323.8	558.8	328.2	66.55	117.3	12.70	400.1		35.10	489.0	
14	14.00	23.75	14.18	2.750	5.000	0.500	17.00	20	1.500	20.75	100
	355.6	603.3	360.2	69.85	127.0	12.70	431.8		38.10	527.1	
16	16.00	27.00	16.19	3.000	5.500	0.500	19.50	20	1.620	23.75	145
	406.4	685.8	411.2	76.20	139.7	12.70	495.3		41.10	603.3	
18	18.00	29.25	18.20	3.250	6.000	0.500	21.50	20	1.750	25.75	177
	457.2	743.0	462.3	82.60	152.4	12.70	546.1		44.50	654.1	
20	20.00	32.00	20.25	3.500	6.500	0.500	24.00	24	1.750	28.50	225
	508.0	812.8	514.4	88.90	165.1	12.70	609.6		44.50	723.9	
24	24.00	37.00	24.25	4.000	7.250	0.500	28.25	24	2.000	33.00	318
	609.6	939.8	616.0	101.6	184.2	12.70	717.6		50.80	838.2	

Notes

- Weights are based on manufacturer's data and are approximate.

Feiting Pipe Engineering Co.,Ltd

Shanghai Plant: 85# Shande Road, Jinshan District Shanghai

Zhejiang Plant: Feiyun Dist, Rui'an Develop area, Zhejiang

Manufacturer/Exporter – Forged, Buttweld Pipe Fittings, Forged Flanges

Contact Us: international@chinafeiting.com; Direct line: 0510-83590332, Fax: 0510-83594500

www.chinafeiting.com