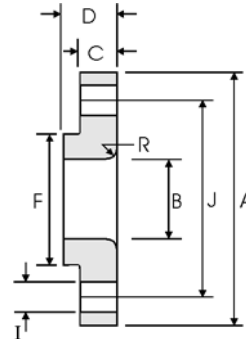


Lap Joint Flanges - ANSI B16.5



Class 400 lb

Pipe		Flange Data				Lap	Hub	Drilling Data			Weight
Nominal Pipe Size	Outside Diameter	Overall Diameter	Inside Diameter	Flange Thickness min	Overall Length	Lap Radius	Hub Diameter	Number of Holes	Bolt Hole Diameter	Diameter of Circle of Holes	kg/ piece
	in mm	in mm	in mm	in mm	in mm	in mm	in mm		in mm	in mm	
1/2	0.840	3.750	0.900	0.560	0.880	0.120	1.500	4	0.620	2.620	0.72
	21.30	95.30	22.90	14.20	22.40	3.000	38.10		15.70	66.55	
3/4	1.050	4.620	1.110	0.620	1.000	0.120	1.880	4	0.750	3.250	1.25
	26.70	117.3	28.20	15.70	25.40	3.000	47.80		19.10	82.60	
1	1.315	4.880	1.380	0.690	1.060	0.120	2.120	4	0.750	3.500	1.50
	33.40	124.0	35.10	17.50	26.90	3.000	53.80		19.10	88.90	
1 1/4	1.660	5.250	1.720	0.810	1.120	0.190	2.500	4	0.750	3.880	2.00
	42.20	133.4	43.70	20.60	28.40	4.800	63.50		19.10	98.60	
1 1/2	1.900	6.120	1.970	0.880	1.250	0.250	2.750	4	0.880	4.500	2.92
	48.30	155.4	50.00	22.40	31.75	6.400	69.85		22.40	114.3	
2	2.375	6.500	2.460	1.000	1.440	0.310	3.310	8	0.750	5.000	3.55
	60.30	165.1	62.50	25.40	36.60	7.900	84.10		19.10	127.0	
2 1/2	2.875	7.500	2.970	1.120	1.620	0.310	3.940	8	0.880	5.880	5.23
	73.00	190.5	75.40	28.40	41.10	7.900	100.1		22.40	149.4	
3	3.500	8.250	3.600	1.125	1.810	0.380	4.620	8	0.880	6.620	6.95
	88.90	209.6	91.40	31.75	46.00	9.700	117.3		22.40	168.1	
3 1/2	4.000	9.000	4.100	1.380	1.940	0.380	5.250	8	1.000	7.250	8.78
	101.6	228.6	104.1	35.10	49.30	9.700	133.4		25.40	184.2	
4	4.500	10.00	4.600	1.380	2.000	0.440	5.750	8	1.000	7.880	10.9
	114.3	254.0	116.8	35.10	50.80	11.20	146.1		25.40	200.2	
5	5.563	11.00	5.690	1.500	2.120	0.440	7.000	8	1.000	9.250	13.7
	141.3	279.4	114.5	38.10	53.80	11.20	177.8		25.40	235.0	
6	6.625	12.50	6.750	1.620	2.250	0.500	8.120	12	1.000	10.62	18.0
	168.3	317.5	171.5	41.10	57.15	12.70	206.2		25.40	269.7	
8	8.625	15.00	8.750	1.880	2.690	0.500	10.25	12	1.120	13.00	28.3
	219.1	381.0	222.3	47.80	68.30	12.70	260.4		28.40	330.2	
10	10.75	17.50	10.92	2.120	4.000	0.500	12.62	16	1.250	15.25	38.8
	273.0	444.5	277.4	53.80	101.6	12.70	320.5		31.75	387.4	
12	12.75	20.50	12.92	2.250	4.250	0.500	14.75	16	1.380	17.75	56.6
	323.8	520.7	328.2	57.15	108.0	12.70	374.7		35.10	450.9	
14	14.00	23.00	14.18	2.380	4.620	0.500	16.75	20	1.380	20.25	78.6
	355.6	584.2	360.2	60.45	117.3	12.70	425.5		35.10	514.4	
16	16.00	25.50	16.19	2.500	5.000	0.500	19.00	20	1.500	22.50	100
	406.4	647.7	411.2	63.50	127.0	12.70	482.6		38.10	571.5	
18	18.00	28.00	18.20	2.620	5.380	0.500	21.00	24	1.500	24.75	122
	457.2	711.2	462.3	66.55	136.7	12.70	533.4		38.10	628.7	
20	20.00	30.50	20.25	2.750	5.750	0.500	23.12	24	1.620	27.00	145
	508.0	774.7	514.4	69.85	146.1	12.70	587.2		41.10	685.8	
24	24.00	36.00	24.25	3.000	6.250	0.500	27.62	24	1.880	32.00	217
	609.6	914.4	616.0	76.20	158.8	12.70	701.5		47.80	812.8	

Notes
 - Weights are based on manufacturer's data and are approximate.

Feiting Pipe Engineering Co.,Ltd

Shanghai Plant: 85# Shande Road, Jinshan District Shanghai

Zhejiang Plant: Feiyun Dist, Rui'an Develop area, Zhejiang

Manufacturer/Exporter – Forged, Buttweld Pipe Fittings, Forged Flanges

Contact Us: international@chinafeiting.com; Direct line: 0510-83590332, Fax: 0510-83594500

www.chinafeiting.com