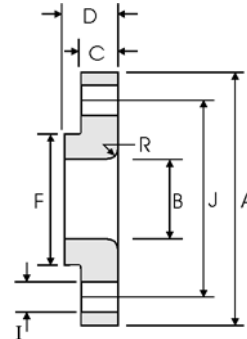


# Lap Joint Flanges - ANSI B16.5



## Class 300 lb

Pipe		Flange Data				Lap	Hub	Drilling Data			Weight
Nominal Pipe Size	Outside Diameter	Overall Diameter	Inside Diameter	Flange Thickness min	Overall Length	Lap Radius	Hub Diameter	Number of Holes	Bolt Hole Diameter	Diameter of Circle of Holes	kg/ piece
	in mm	in mm	in mm	in mm	in mm	in mm	in mm		in mm	in mm	
1/2	0.840	3.750	0.900	0.560	0.880	0.120	1.500	4	0.620	2.620	0.62
	21.30	95.20	22.90	14.20	22.30	3.000	38.10		15.70	66.55	
3/4	1.050	4.620	1.110	0.620	1.000	0.120	1.880	4	0.750	3.250	1.10
	26.70	117.3	28.20	15.70	25.40	3.000	47.70		19.00	82.50	
1	1.315	4.880	1.380	0.690	1.060	0.120	2.120	4	0.750	3.500	1.33
	33.40	123.9	35.10	17.50	26.90	3.000	53.80		19.0	88.90	
1 1/4	1.660	5.250	1.720	0.750	1.060	0.190	2.500	4	0.750	3.880	1.65
	42.20	133.3	43.70	19.00	26.90	4.800	63.50		19.00	98.50	
1 1/2	1.900	6.120	1.970	0.810	1.190	0.250	2.750	4	0.880	4.500	2.44
	48.30	155.4	50.00	20.60	30.20	6.400	69.85		22.30	114.3	
2	2.375	6.500	2.460	0.880	1.310	0.310	3.310	8	0.750	5.000	2.83
	60.30	165.1	62.50	22.30	33.20	7.900	84.00		19.10	127.0	
2 1/2	2.875	7.500	2.970	1.000	1.500	0.310	3.940	8	0.880	5.880	4.25
	73.00	190.5	75.40	25.40	38.10	7.900	100.0		22.30	149.3	
3	3.500	8.250	3.600	1.120	1.690	0.380	4.620	8	0.880	6.620	5.78
	88.90	209.5	91.40	28.40	42.90	9.700	117.3		22.30	168.1	
3 1/2	4.000	9.000	4.100	1.190	1.750	0.380	5.250	8	0.880	7.250	7.27
	101.6	228.6	104.1	30.20	44.40	9.700	133.3		22.30	184.1	
4	4.500	10.00	4.600	1.250	1.880	0.440	5.750	8	0.880	7.880	9.55
	114.3	254.0	116.8	31.70	47.70	11.20	146.0		22.30	200.1	
5	5.563	11.00	5.690	1.380	2.000	0.440	7.000	8	0.880	9.250	12.2
	141.3	279.4	114.5	35.00	50.80	11.20	177.8		22.30	234.9	
6	6.625	12.50	6.750	1.440	2.060	0.500	8.120	12	0.880	10.62	15.5
	168.3	317.5	171.5	36.50	52.30	12.70	206.2		22.30	269.7	
8	8.625	15.00	8.750	1.620	2.440	0.500	10.25	12	1.000	13.00	24.1
	219.1	381.0	222.3	41.10	61.90	12.70	260.3		25.40	330.2	
10	10.75	17.50	10.92	1.880	3.750	0.500	12.62	16	1.120	15.25	34.4
	273.0	444.5	277.4	47.70	95.20	12.70	320.5		28.40	387.3	
12	12.75	20.50	12.92	2.000	4.000	0.500	14.75	16	1.250	17.75	50.4
	323.8	520.7	328.2	50.80	101.6	12.70	374.6		31.70	450.8	
14	14.00	23.00	14.18	2.120	4.380	0.500	16.75	20	1.250	20.25	70.9
	355.6	584.2	360.2	53.80	111.2	12.70	425.4		31.70	514.3	
16	16.00	25.50	16.19	2.250	4.750	0.500	19.00	20	1.380	22.50	89.5
	406.4	647.7	411.2	57.15	120.6	12.70	482.6		35.00	571.5	
18	18.00	28.00	18.20	2.380	5.120	0.500	21.00	24	1.380	24.75	111
	457.2	711.2	462.3	60.45	130.0	12.70	533.4		35.00	628.6	
20	20.00	30.50	20.25	2.500	5.500	0.500	23.12	24	1.380	27.00	137
	508.0	774.7	514.4	63.50	139.7	12.70	587.2		35.0	685.8	
24	24.00	36.00	24.25	2.750	6.000	0.500	27.62	24	1.620	32.00	204
	609.6	914.4	616.0	69.8	152.4	12.70	701.5		41.10	812.8	

**Notes**

- Weights are based on manufacturer's data and are approximate.

**Feiting Pipe Engineering Co.,Ltd**

**Shanghai Plant:** 85# Shande Road, Jinshan District Shanghai

**Zhejiang Plant:** Feiyun Dist, Rui'an Develop area, Zhejiang

Manufacturer/Exporter – Forged, Butt-weld Pipe Fittings, Forged Flanges

Contact Us: international@chinafeiting.com; Direct line: 0510-83590332, Fax: 0510-83594500

www.chinafeiting.com