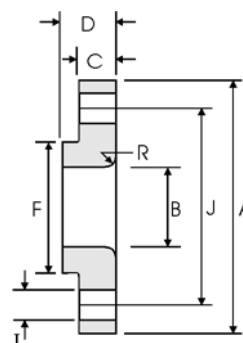


Lap Joint Flanges - ANSI B16.5



Class 150 lb

| Nominal Pipe Size | Pipe | | Flange Data | | | Lap | Hub | Drilling Data | | | Weight kg/ piece |
|-------------------|------------------|------------------|-----------------|----------------------|----------------|----------------|----------------|-----------------|--------------------|-----------------------------|---------------------|
| | Outside Diameter | Overall Diameter | Inside Diameter | Flange Thickness min | Overall Length | Lap Radius | Hub Diameter | Number of Holes | Bolt Hole Diameter | Diameter of Circle of Holes | |
| | in mm | in mm | in mm | in mm | in mm | in mm | in mm | | in mm | in mm | |
| 1/2 | 0.840 21.30 | 3.500 88.90 | 0.900 22.90 | 0.440 11.20 | 0.620 15.70 | 0.120 3.000 | 1.190 30.20 | 4 | 0.620 15.70 | 2.380 60.45 | 0.38 |
| 3/4 | 1.050 26.70 | 3.880 98.60 | 1.110 28.20 | 0.500 12.70 | 0.620 15.70 | 0.120 3.000 | 1.500 38.10 | 4 | 0.620 15.70 | 2.750 69.85 | 0.55 |
| 1 | 1.315 33.40 | 4.250 108.0 | 1.380 35.10 | 0.560 14.20 | 0.690 17.50 | 0.120 3.000 | 1.940 49.30 | 4 | 0.620 15.70 | 3.120 79.25 | 0.76 |
| 1 1/4 | 1.660 42.20 | 4.620 117.3 | 1.720 43.70 | 0.620 15.70 | 0.810 20.60 | 0.190 4.800 | 2.310 58.70 | 4 | 0.620 15.70 | 3.500 88.90 | 1.01 |
| 1 1/2 | 1.900 48.30 | 5.000 127.0 | 1.970 50.00 | 0.690 17.50 | 0.880 22.40 | 0.250 6.400 | 2.560 65.00 | 4 | 0.620 15.70 | 3.880 98.60 | 1.30 |
| 2 | 2.375 60.30 | 6.000 152.4 | 2.460 62.50 | 0.750 19.10 | 1.000 25.40 | 0.310 7.900 | 3.060 77.70 | 4 | 0.750 19.10 | 4.750 120.7 | 2.03 |
| 2 1/2 | 2.875 73.00 | 7.000 177.8 | 2.970 75.40 | 0.880 22.40 | 1.120 28.40 | 0.310 7.900 | 3.560 90.40 | 4 | 0.750 19.10 | 5.500 139.7 | 3.25 |
| 3 | 3.500 88.90 | 7.500 190.5 | 3.600 91.40 | 0.940 23.90 | 1.190 30.20 | 0.380 9.700 | 4.250 108.0 | 4 | 0.750 19.10 | 6.000 152.4 | 3.81 |
| 3 1/2 | 4.000 101.6 | 8.500 215.9 | 4.100 104.1 | 0.940 23.90 | 1.250 31.75 | 0.380 9.700 | 4.810 122.2 | 8 | 0.750 19.10 | 7.000 177.8 | 4.76 |
| 4 | 4.500 114.3 | 9.000 228.6 | 4.600 116.8 | 0.940 23.90 | 1.310 33.30 | 0.440 11.20 | 5.310 134.9 | 8 | 0.750 19.10 | 7.500 190.5 | 5.25 |
| 5 | 5.563 141.3 | 10.00 254.0 | 5.690 114.5 | 0.940 23.90 | 1.440 36.60 | 0.440 11.20 | 6.440 163.6 | 8 | 0.880 22.40 | 8.500 215.9 | 6.02 |
| 6 | 6.625 168.3 | 11.00 279.4 | 6.750 171.5 | 1.000 25.40 | 1.560 39.60 | 0.500 12.70 | 7.560 192.0 | 8 | 0.880 22.40 | 9.500 241.3 | 7.40 |
| 8 | 8.625 219.1 | 13.50 342.9 | 8.750 222.3 | 1.120 28.40 | 1.750 44.50 | 0.500 12.70 | 9.690 246.1 | 8 | 0.880 22.40 | 11.75 298.5 | 12.1 |
| 10 | 10.75 273.0 | 16.00 406.4 | 10.92 277.4 | 1.190 30.20 | 1.940 49.30 | 0.500 12.70 | 12.00 304.8 | 12 | 1.000 25.40 | 14.25 362.0 | 16.4 |
| 12 | 12.75 323.8 | 19.00 482.6 | 12.92 328.2 | 1.250 31.75 | 2.190 55.60 | 0.500 12.70 | 14.38 365.3 | 12 | 1.000 25.40 | 17.00 431.8 | 26.1 |
| 14 | 14.00 355.6 | 21.00 533.4 | 14.18 360.2 | 1.380 35.10 | 3.120 79.25 | 0.500 12.70 | 15.75 400.1 | 12 | 1.120 28.40 | 18.75 476.3 | 34.5 |
| 16 | 16.00 406.4 | 23.50 596.9 | 16.19 411.2 | 1.440 36.60 | 3.440 87.40 | 0.500 12.70 | 18.00 457.2 | 16 | 1.120 28.40 | 21.25 539.8 | 44.6 |
| 18 | 18.00 457.2 | 25.00 635.0 | 18.20 462.3 | 1.560 39.60 | 3.810 96.80 | 0.500 12.70 | 19.88 505.0 | 16 | 1.250 31.75 | 22.75 577.9 | 48.7 |
| 20 | 20.00 508.0 | 27.50 698.5 | 20.25 514.4 | 1.690 42.90 | 4.060 103.1 | 0.500 12.70 | 22.00 558.8 | 20 | 1.250 31.75 | 25.00 635.0 | 61.6 |
| 24 | 24.00 609.6 | 32.00 812.8 | 24.25 616.0 | 1.880 47.80 | 4.380 111.3 | 0.500 12.70 | 26.12 663.4 | 20 | 1.380 35.10 | 29.50 749.3 | 86.6 |

Notes

- Weights are based on manufacturer's data and are approximate.