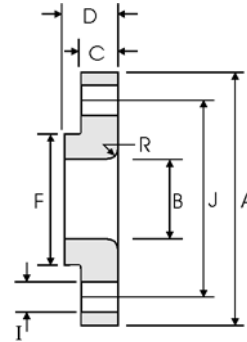


# Lap Joint Flanges - ANSI B16.5



## Class 1500 lb

Pipe		Flange Data				Lap	Hub	Drilling Data			Weight
Nominal Pipe Size	Outside Diameter	Overall Diameter	Inside Diameter	Flange Thickness min	Overall Length	Lap Radius	Hub Diameter	Number of Holes	Bolt Hole Diameter	Diameter of Circle of Holes	kg/ piece
	in mm	in mm	in mm	in mm	in mm	in mm	in mm		in mm	in mm	
1/2	0.840	4.750	0.900	0.880	1.250	0.120	1.500	4	0.880	3.250	1.71
	21.30	120.6	22.90	22.30	31.70	3.000	38.10		22.30	82.50	
3/4	1.050	5.120	1.110	1.000	1.380	0.120	1.750	4	0.880	3.500	2.30
	26.70	130.0	28.20	25.40	35.00	3.000	44.40		22.30	88.90	
1	1.315	5.880	1.380	1.120	1.620	0.120	2.060	4	1.000	4.000	3.40
	33.40	149.3	35.10	28.40	41.10	3.000	52.30		25.40	101.6	
1 1/4	1.660	6.250	1.720	1.120	1.620	0.190	2.500	4	1.000	4.380	3.85
	42.20	158.7	43.70	28.40	41.10	4.800	63.50		25.40	111.2	
1 1/2	1.900	7.000	1.970	1.250	1.750	0.250	2.750	4	1.120	4.880	5.28
	48.30	177.8	50.00	31.70	44.40	6.400	69.85		28.40	123.9	
2	2.375	8.500	2.460	1.500	2.250	0.310	4.120	8	1.000	6.500	9.78
	60.30	215.9	62.50	38.10	57.15	7.900	104.6		25.40	165.1	
2 1/2	2.875	9.620	2.970	1.620	2.500	0.310	4.880	8	1.120	7.500	13.6
	73.00	244.3	75.40	41.10	63.50	7.900	123.9		28.40	190.5	
3	3.500	10.50	3.600	1.880	2.880	0.380	5.250	8	1.250	8.000	17.8
	88.90	266.7	91.40	47.70	73.15	9.700	133.3		31.70	203.2	
4	4.500	12.25	4.600	2.120	3.560	0.440	6.380	8	1.380	9.500	27.5
	114.3	311.1	116.8	53.80	90.40	11.20	162.0		35.00	241.3	
5	5.563	14.75	5.690	2.880	4.120	0.440	7.750	8	1.620	11.50	51.5
	141.3	374.6	114.5	73.15	104.6	11.20	196.8		41.10	292.1	
6	6.625	15.50	6.750	3.250	4.690	0.500	9.000	12	1.500	12.50	62.0
	168.3	399.7	171.5	82.50	119.1	12.70	228.6		38.10	317.5	
8	8.625	19.00	8.750	3.620	5.620	0.500	11.50	12	1.750	15.50	105
	219.1	482.6	222.3	91.90	142.7	12.70	292.1		44.40	393.7	
10	10.75	23.00	10.92	4.250	7.000	0.500	14.50	12	2.000	19.00	179
	273.0	584.2	277.4	107.9	177.8	12.70	368.3		50.80	482.6	
12	12.75	26.50	12.92	4.880	8.620	0.500	17.75	16	2.120	22.50	269
	323.8	673.1	328.2	123.9	218.9	12.70	450.8		53.80	571.5	
14	14.00	29.50	14.18	5.250	9.500	0.500	19.50	16	2.380	25.00	365
	355.6	749.3	360.2	133.3	241.3	12.70	495.3		60.45	635.0	
16	16.00	32.50	16.19	5.750	10.25	0.500	21.75	16	2.620	27.75	459
	406.4	825.5	411.2	146.0	260.3	12.70	552.4		66.55	704.8	
18	18.00	36.00	18.20	6.380	10.88	0.500	23.50	16	2.880	30.50	598
	457.2	914.4	462.3	162.0	276.3	12.70	596.9		73.15	774.7	
20	20.00	38.75	20.25	7.000	11.50	0.500	25.25	16	3.120	32.75	712
	508.0	984.2	514.4	177.8	292.1	12.70	641.3		79.25	831.8	
24	24.00	46.00	24.25	8.000	13.00	0.500	30.00	16	3.620	39.00	1090
	609.6	1168.4	616.0	203.2	330.2	12.70	762.0		91.90	990.6	

### Notes

- Weights are based on manufacturer's data and are approximate.

### Feiting Pipe Engineering Co.,Ltd

Shanghai Plant: 85# Shande Road, Jinshan District Shanghai

Zhejiang Plant: Feiyun Dist, Rui'an Develop area, Zhejiang

Manufacturer/Exporter – Forged, Buttweld Pipe Fittings, Forged Flanges

Contact Us: international@chinafeiting.com; Direct line: 0510-83590332, Fax: 0510-83594500

www.chinafeiting.com