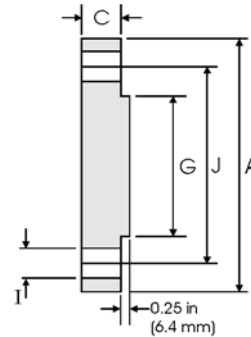
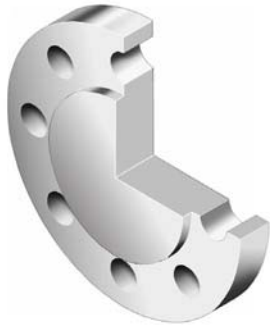


# Blind Flanges - ANSI B16.5



## Class 600 lb

Nominal Pipe Size	Pipe		Flange Data		Raised Face	Drilling Data		Weight kg/piece
	Outside Diameter in mm	Overall Diameter in mm	Flange Thickness min in mm	Face Diameter in mm	Number of Holes	Bolt Hole Diameter in mm	Diameter of Circle of Holes in mm	
1/2	0.840	3.750	0.560	1.380	4	0.620	2.620	0.76
	21.30	95.20	14.20	35.10		15.70	66.55	
3/4	1.050	4.620	0.620	1.690	4	0.750	3.250	1.28
	26.70	117.3	15.70	42.90		19.10	82.60	
1	1.315	4.880	0.690	2.000	4	0.750	3.500	1.60
	33.40	123.9	17.50	50.80		19.10	88.90	
1 1/4	1.660	5.250	0.810	2.500	4	0.750	3.880	2.23
	42.20	133.3	20.60	63.50		19.10	98.60	
1 1/2	1.900	6.120	0.880	2.880	4	0.880	4.500	3.25
	48.30	155.4	22.30	73.15		22.40	114.3	
2	2.375	6.500	1.000	3.620	8	0.750	5.000	4.15
	60.30	165.1	25.40	91.90		19.10	127.0	
2 1/2	2.875	7.500	1.120	4.120	8	0.880	5.880	6.13
	73.00	190.5	28.40	104.6		22.40	149.4	
3	3.500	8.250	1.250	5.000	8	0.880	6.620	8.44
	88.90	209.5	31.70	127.0		22.40	168.1	
3 1/2	4.000	9.000	1.380	5.500	8	1.000	7.250	11.0
	101.6	228.6	35.00	139.7		25.40	184.2	
4	4.500	10.75	1.500	6.190	8	1.000	8.500	17.3
	114.3	273.1	38.10	157.2		25.40	215.9	
5	5.563	13.00	1.750	7.310	8	1.120	10.50	29.4
	141.3	330.2	44.50	185.7		28.40	266.7	
6	6.625	14.00	1.880	8.500	12	1.120	11.50	36.1
	168.3	355.6	47.80	215.9		28.40	292.1	
8	8.625	16.50	2.190	10.62	12	1.250	13.75	58.9
	219.1	419.1	55.60	269.7		31.75	349.3	
10	10.75	20.00	2.500	12.75	16	1.380	17.00	97.5
	273.0	508.0	63.50	323.9		35.10	431.8	
12	12.75	22.00	2.620	15.00	20	1.380	19.25	124
	323.8	558.8	66.55	381.0		35.10	489.0	
14	14.00	23.75	2.750	16.25	20	1.500	20.75	151
	355.6	603.3	69.85	412.8		38.10	527.1	
16	16.00	27.00	3.000	18.50	20	1.620	23.75	214
	406.4	685.8	76.20	469.9		41.10	603.3	
18	18.00	29.25	3.250	21.00	20	1.750	25.75	272
	457.2	743.0	82.60	533.4		44.50	654.1	
20	20.00	32.00	3.500	23.00	24	1.750	28.50	349
	508.0	812.8	88.90	584.2		44.50	723.9	
24	24.00	37.00	4.000	27.25	24	2.000	33.00	533
	609.6	939.8	101.6	692.2		50.80	838.2	

**Notes**

- Weights are based on manufacturer's data and are approximate.

**Feiting Pipe Engineering Co.,Ltd**

**Shanghai Plant:** 85# Shande Road, Jinshan District Shanghai

**Zhejiang Plant:** Feiyun Dist, Rui'an Develop area, Zhejiang

Manufacturer/Exporter – Forged, Butt-weld Pipe Fittings, Forged Flanges

Contact Us: international@chinafeiting.com; Direct line: 0510-83590332, Fax: 0510-83594500

www.chinafeiting.com