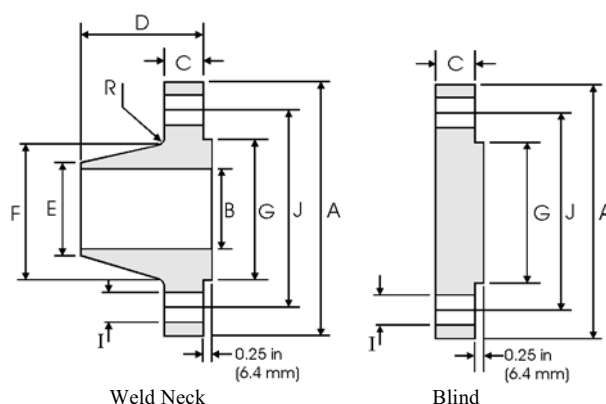
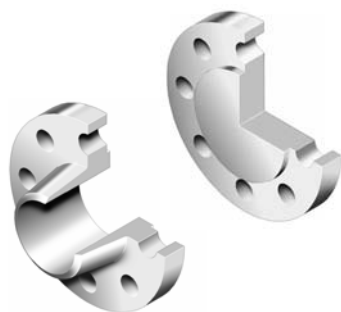


ASME B16.47 Series A (MSS SP-44) Flanges



Class 400 lb

| Nominal Pipe Size | Flange Data | | | | Hub Data | | Raised Face | Drilling Data | | | Radius |
|-------------------|------------------|--------------------------|----------------------------|--------------------|------------------------|-----------------|-----------------|-----------------|--------------------|-----------------------------|---------------|
| | Overall Diameter | WNF Flange Thickness min | Blind Flange Thickness min | Overall Length WNF | Diameter at Weld Bevel | Hub Diameter | Face Diameter | Number of Holes | Bolt Hole Diameter | Diameter of Circle of Holes | Fillet |
| | in mm | in mm | in mm | in mm | in mm | in mm | in mm | | in mm | in mm | in mm |
| 22 | 33.00 838.20 | 2.88 73.15 | 2.88 73.15 | 6.75 171.45 | 22.00 558.80 | 25.25 641.35 | 25.25 641.35 | 24 | 1.75 44.45 | 29.25 742.95 | 0.44 11.18 |
| 26 | 38.25 971.55 | 3.50 88.90 | 3.88 98.55 | 7.62 193.55 | 26.00 660.40 | 28.62 726.95 | 29.50 749.30 | 28 | 1.88 47.75 | 34.50 876.30 | 0.44 11.18 |
| 28 | 40.75 1035.1 | 3.75 95.25 | 4.12 104.65 | 8.12 206.25 | 28.00 711.20 | 30.81 782.57 | 31.50 800.10 | 28 | 2.00 50.80 | 37.00 939.80 | 0.50 12.70 |
| 30 | 43.00 1092.2 | 4.00 101.60 | 4.38 111.25 | 8.62 218.95 | 30.00 762.00 | 32.94 836.68 | 33.75 857.25 | 28 | 2.12 53.85 | 39.25 996.95 | 0.50 12.70 |
| 32 | 45.25 1149.4 | 4.25 107.95 | 4.56 115.82 | 9.12 231.65 | 32.00 812.80 | 35.00 889.00 | 36.00 914.40 | 28 | 2.12 53.85 | 41.50 1054.1 | 0.50 12.70 |
| 34 | 47.50 1206.5 | 4.38 111.25 | 4.81 122.17 | 9.50 241.30 | 34.00 863.60 | 37.19 944.63 | 38.00 965.20 | 28 | 2.12 53.85 | 43.50 1104.9 | 0.56 14.22 |
| 36 | 50.00 1270.0 | 4.50 114.30 | 5.06 128.52 | 9.88 250.95 | 36.00 914.40 | 39.38 1000.3 | 40.25 1022.4 | 32 | 2.12 53.85 | 46.00 1168.4 | 0.56 14.22 |
| 38 | 47.50 1206.5 | 4.88 123.95 | 4.88 123.95 | 8.12 206.25 | 48.00 1219.2 | 39.50 1003.3 | 40.75 1035.1 | 32 | 1.88 47.75 | 44.00 1117.6 | 0.56 14.22 |
| 40 | 50.00 1270.0 | 5.12 130.05 | 5.12 130.05 | 8.50 215.90 | 40.00 1016.0 | 41.50 1054.1 | 43.00 1092.2 | 32 | 2.00 50.80 | 46.25 1174.8 | 0.56 14.22 |
| 42 | 52.00 1320.8 | 5.25 133.35 | 5.25 133.35 | 8.81 223.77 | 42.00 1066.8 | 43.62 1107.9 | 45.00 1143.0 | 32 | 2.00 50.80 | 48.25 1225.6 | 0.56 14.22 |
| 44 | 54.50 1384.3 | 5.50 139.70 | 5.50 139.70 | 9.18 233.17 | 44.00 1117.6 | 45.62 1158.7 | 47.25 1200.2 | 32 | 2.12 53.85 | 50.50 1282.7 | 0.56 14.22 |
| 46 | 56.75 1441.5 | 5.75 146.05 | 5.75 146.05 | 9.62 244.35 | 46.00 1168.4 | 47.75 1212.9 | 49.50 1257.3 | 36 | 2.12 53.85 | 52.75 1339.9 | 0.56 14.22 |
| 48 | 59.50 1511.3 | 6.00 152.40 | 6.00 152.40 | 10.12 257.05 | 48.00 1219.2 | 49.88 1267.0 | 51.50 1308.1 | 28 | 2.38 60.45 | 55.25 1403.4 | 0.56 14.22 |

Notes

- ASME B16.47 Series A flanges (\geq NPS 26) are MSS SP-44 flanges. MSS SP-44 also covers NPS 12 to NPS 24 flanges which are equivalent to ASME B16.5. MSS SP-44 is the only source for the NPS 22 flange dimensions above.
- Class 400 Series A dimensions at NPS 38 and larger also apply to Class 400 Series B flanges.
- Dimension B is to be specified by the purchaser. It corresponds to the pipe inside diameter.
- Flat face flanges may be provided at full thickness, C + raised face, or with raised face removed (the latter is nonstandard).
- WNF = Weld Neck Flange.
- The large end of the hub may be straight or tapered.

Feiting Pipe Engineering Co.,Ltd

Shanghai Plant: 85# Shande Road, Jinshan District Shanghai

Zhejiang Plant: Feiyun Dist, Rui'an Develop area, Zhejiang

Manufacturer/Exporter – Forged, Butt-weld Pipe Fittings, Forged Flanges

Contact Us: international@chinafeiting.com; Direct line: 0510-83590332, Fax: 0510-83594500

www.chinafeiting.com